

SWITCHGRASS.

CLIMATE RESILIENCY FUND NGO.

Website: www.global-crf.org

Email: globalcrf.org@gmail.com

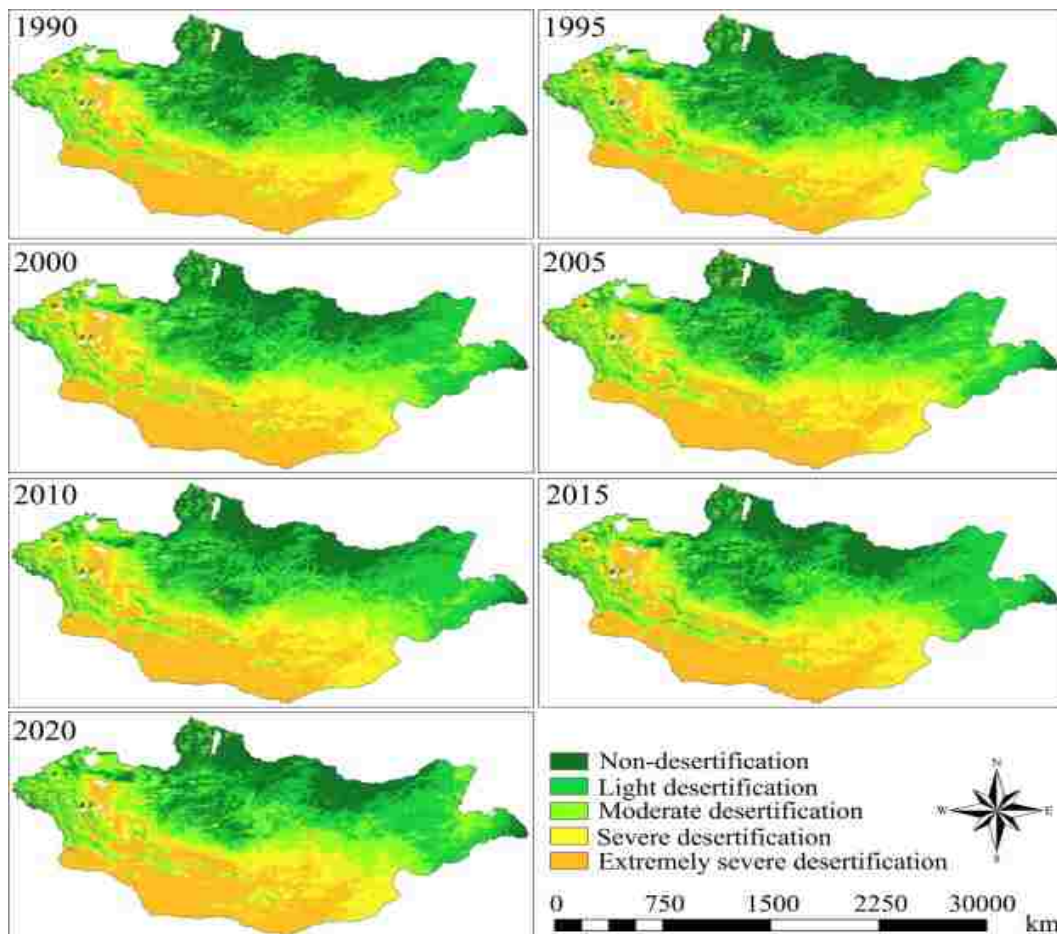
esenzorigt@gmail.com

Phone: ++976 8051 9333, 8051 9336, 9596 0219

Ulaanbaatar
Mongolia
2025

The Climate Resiliency Fund (CRF) NGO established and developed to introduce Switchgrass plant into Mongolia to fight against desertification of Mongolia.

In Mongolia, we do have 125 million hectares of deserted land which is covering 78% of the whole country (picture 1).



Picture 1.

The priority and concept of the whole project is how Mongolian deserted area with no green cover or areas with no trees and grasses which we mentioned above that covering 78% of the country is affecting not only Mongolia, the Climate Change, Global Warming, East Asian

Ecosystems which is the Yellow Dust and direct heat produced from non-green covered grassless land.

Our organization is aiming to introduce several programs, campaign and projects listed below.

1. “Desertification Free” world campaign
2. “Khaan Uvs Mongolia” program
3. “Switchgrass and other plants to absorb CO₂” project.
4. “Change for Climate” serial media content.

CLIMATE RESILIENCY FUND NGO

CRF NGO is established and founded by Head, Founder and Chairman of Board Mr. Zoregt. Munkhjav. Esen who is a Climate change doctorate, researcher, geologist. Since he is a geologist, he has been working and researching on the field of Climate change, Global warming, from year 2001 and from year 2008 he started working on absorbing of CO₂ emission, reducing GHG, Mongolian desertification, yellow dust reduction issues.

CRF NGO obtained 40,000 hectors of land from 4 provinces each just to start with, and able to expand those lands as much as we need for switchgrass establishment in Mongolia.

CRF NGO Mr. Zoregt.M. Esen is the one only proud owner of patents and all the intellectual rights regarding establishment of switchgrass in Mongolia.

After the establishment of the CRF NGO, we are organized and operating as below.

- Board (Chairman of Board, Board members, CEO),
- Executive, management and operations team,
- Scientists and Researchers committee,
- Honorable members committee,
- Marketing management team,
- PR, Media social relations team

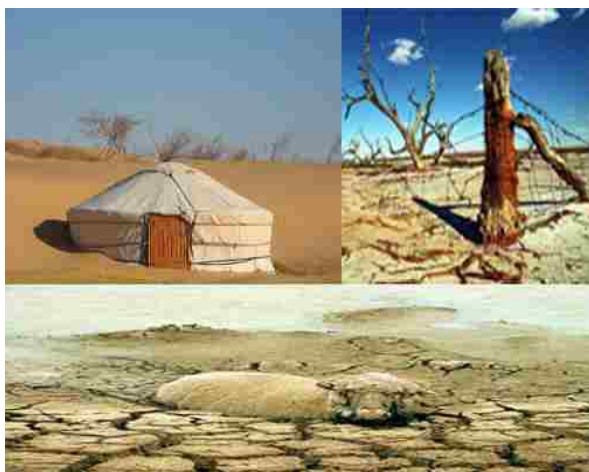
As we are aiming and focusing on the Global issue of mankind The Climate change, we do have so many local and international parties are involved, cooperating, operating and supporting us including Mongolian Government, Office Of The President, Ministry of Environment and Climate change, Ministry of Food Agriculture and Light Industry, Mongolian UN, UN Resident Representative in Mongolia, Life Science University, Governors of Provinces, Mongolian Academy of Science, One Billion Trees National Campaign, Foreign Embassies, foreign and local NGOs, local and foreign researchers and scientists, local and foreign advisors of this field, Social media platforms, radio and TV including Mongolian National Broadcasting.

As legally forest is not available to privatized, owned, and leased in Mongolia for any proposes including for carbon trade.

However, carbon trade can be done by investing and establishing plants which absorbs the CO₂ and since CRF NGO is expert on this field, finding the perfect and customized solutions is our goal for this kind of business opportunities regarding Mongolian laws and jurisdictions.

MONGOLIAN DESERTIFICATION

- At the present, 78% of the area (126 million hector) is deserted in Mongolia with 3 stages of desertification by it is category.
- Yellow dust caused by non-green grass covered Mongolian deserted soul is affecting China, Korea, and Japan.
- Extreme heat and super-fast evaporation caused by non-grass covered deserted land.
- Because of the desertification and over grassing, the herders facing great difficulty of mass death of the herds luck of no pasture to feed enough to the animals during summertime and autumn so the herds have no sufficient energy and power to undergo long winter and harsh spring.
- Herders left with not sufficient herds and income, to go along with, they have to sell the rest of the animals and move to the city. It causes over population density to the city centers, traffic jam, social welfare, pollutions, producing GHG, those herders named such as Climate refugees or Climate migration.
- Less population density to countryside meaning less inhabitant, economy shrinkage, unemployment, marrying to relatives (hazard to national security), (pictures 2-5)



Pictures 2-5

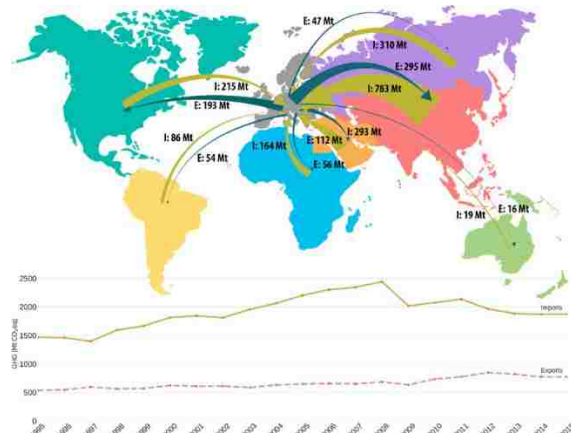
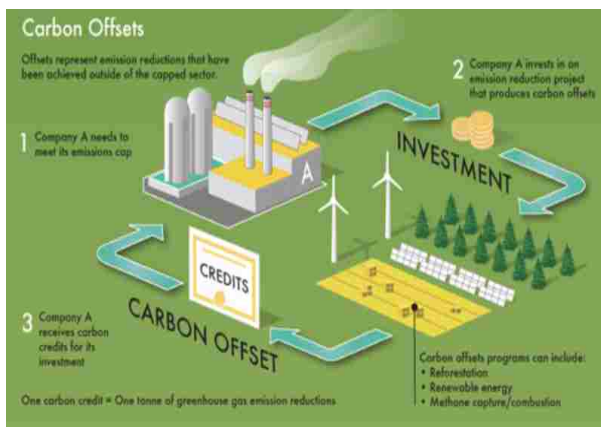
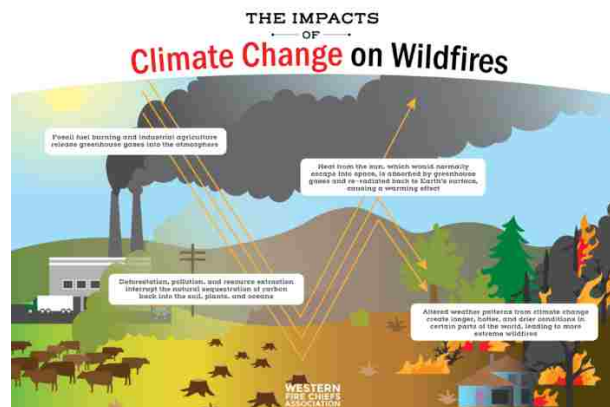
ENVIRONMENTAL IMPACTS

Scientists and researchers saying establishing grass, Khailaas, Zag tree of Gobi Desert also extinguished plants in Mongolian non green, grassless, deserted land will show a significant negative impact not only Mongolian desertification, but also on Climate change, Global warming, East Asian ecosystem including Yellow dust which impacts Japan, Korea, China and even the hurricane to west coast of North America.

The direct sunlight hitting grassless ground will produce an extreme heat back to the atmosphere and when it is travels east to the China sea, extremely hot and dry air will collide with the slightly cooler and wet oceanic air that is start circling and while it is hovering to the west over the ocean, the circle will expand more and more to become hurricane which hits the west coast of North America.

Sunlight hitting the grassless land when it is wet after rainfall, the extreme heat will have very fast evaporation process to frequent evaporation which will bring a thunderstorm.

Having 125 hectors of deserted grassless land covered in switchgrass will absorb plenty of CO2 (GHG) and could be a great source of a carbon trade. (Picture 17-20)

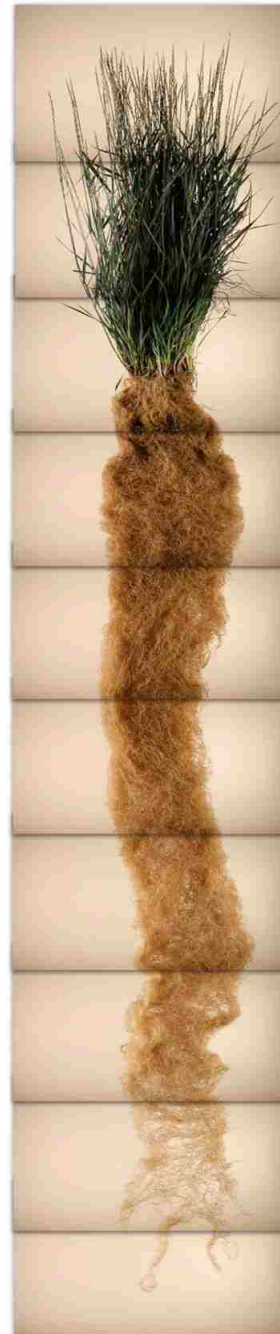


SOLUTION

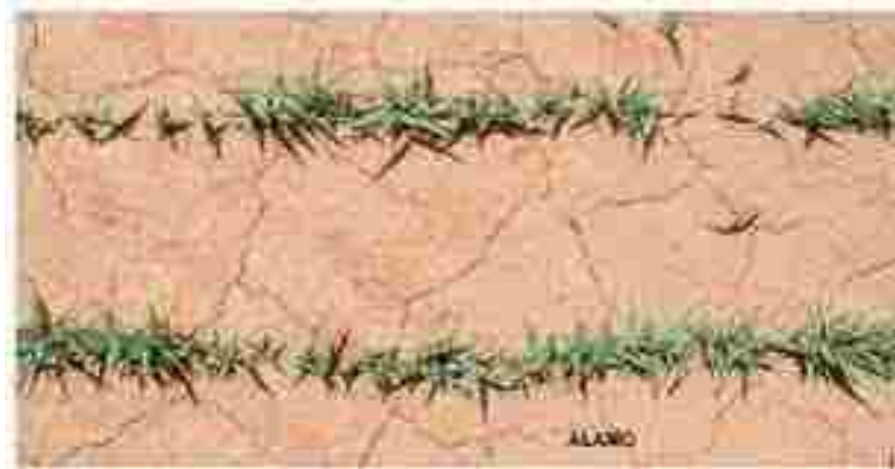
Planting adoptable and best suitable grasses, trees, bushes such as SWITCHGRASS, and regrow local plants using special methods natruly.



ROOT



GROWING



Switchgrass Harvest & Storage



SWITCHGRASS

BIOETHANOL

FUELING THE FUTURE FOR CLEANER SKIES

Take off with UOP's ethanol to jet (ETJ) process technology. The next generation of renewable fuels.

BENEFITS OF ETJ

- High jet yield output
- Lower CAPEX & OPEX
- Reduced GHG emissions
- Higher profit margins

1. FEEDSTOCK SUPPLY

2. ETHANOL PLANT

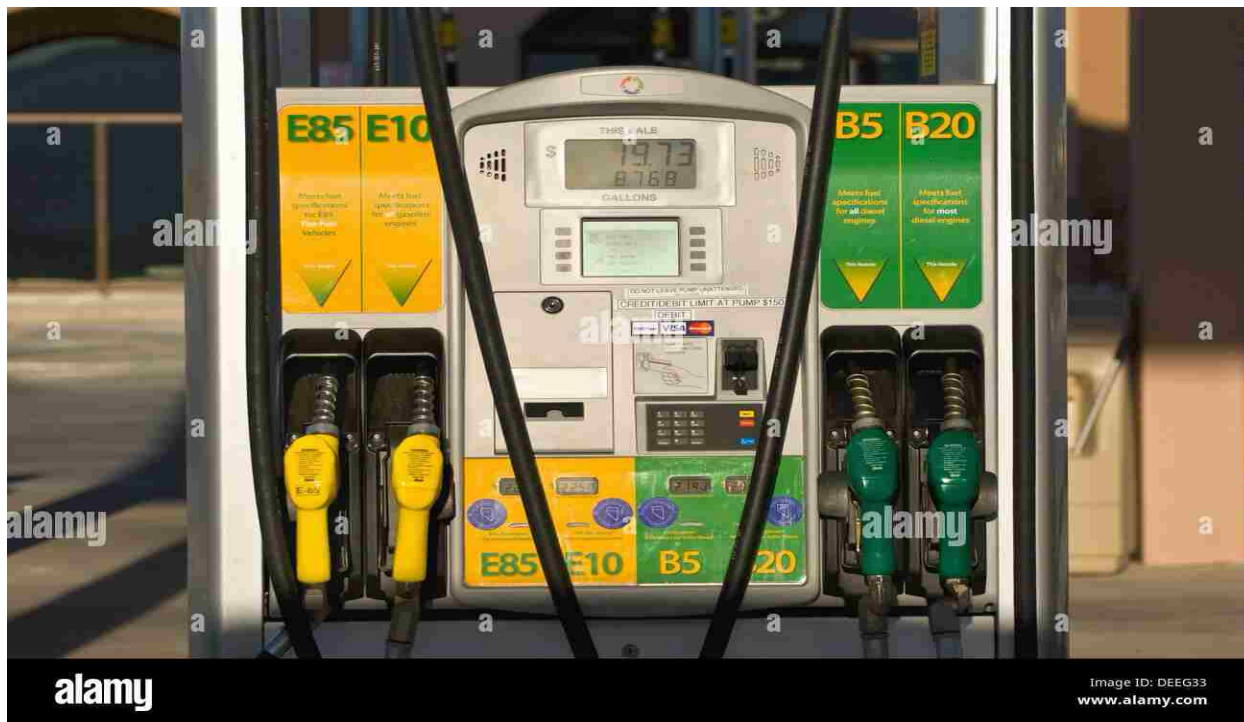
3. ETHANOL TO JET

4. SUSTAINABLE AVIATION FUEL (SAF) BLEND

5. SUSTAINABLE AVIATION FUEL (SAF)

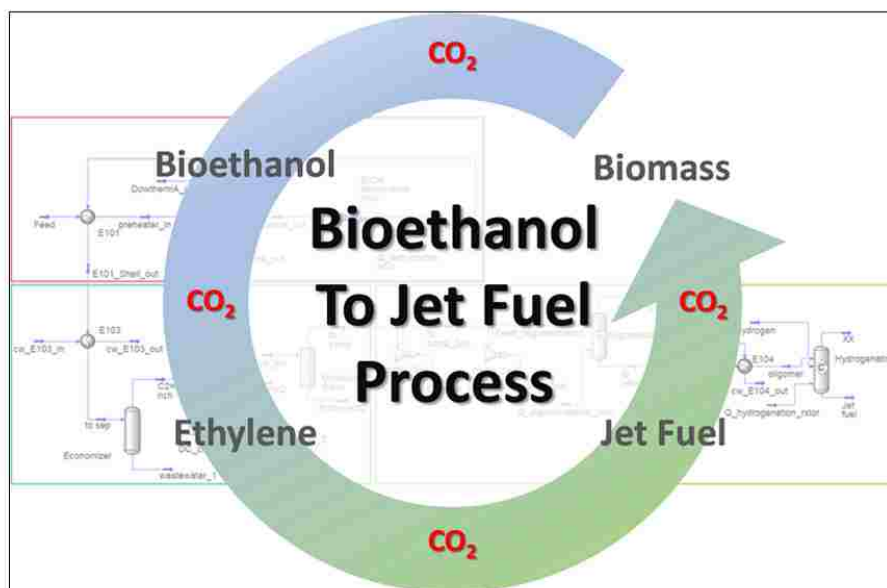
Honeywell





alamy

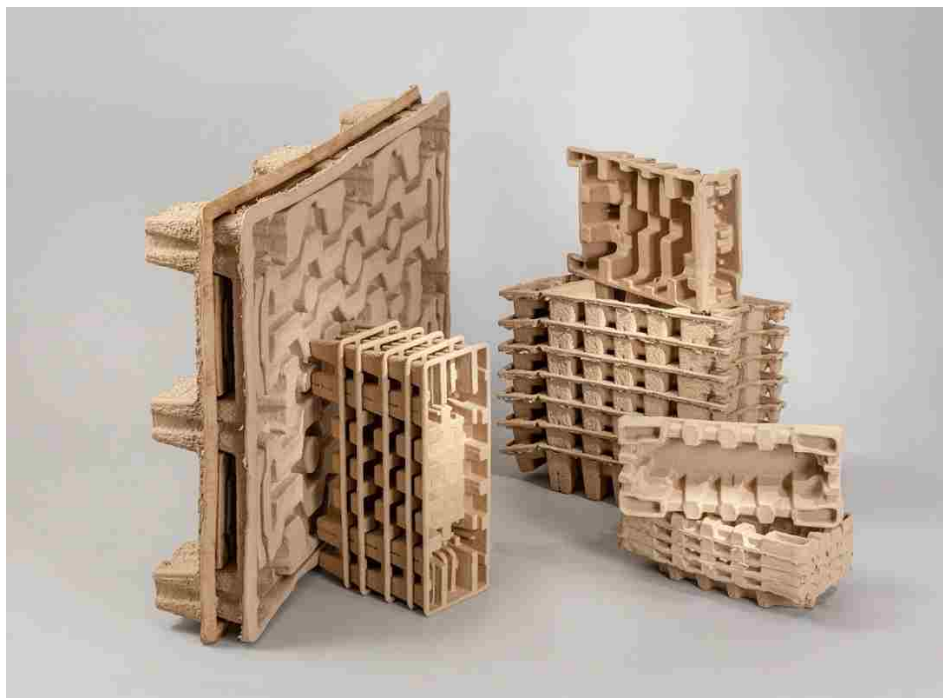
Image ID: DEEG33
www.alamy.com





RAW MATERIAL FOR RENEWABLE, BIODEGRADABLE PAPER AND PACKAGING INDUSTRY





ANIMAL FEED



Alamo Switchgrass

